

- 1
- 2
- 3
- 4
- 5
- 6
- 7
- 8
- 9
- 10
- 11
- 12
- 13
- 14
- 15
- 16
- 17
- 18
- 19

MATERIAL

Stainless steel AISI 316 / AISI 316Ti
Ultrasonically checked.

STANDARD EXECUTIONS

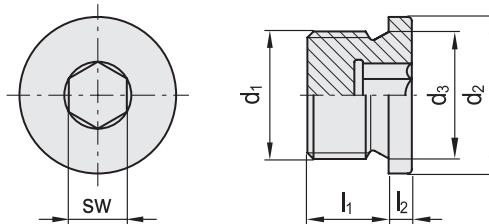
- **DIN 908-A4-A**: without packing ring.
- **DIN 908-A4-AC**: with copper flat packing ring (DIN 7603).
- **DIN 908-A4-AA**: with aluminium flat packing ring (DIN 7603).
- **DIN 908-A4-AN**: with stainless steel flat packing ring (DIN 7603).

FEATURES AND APPLICATIONS

The packing rings in metal, copper or aluminium, allow the use of DIN 908 plugs also on high temperature applications.
Not advisable to use when there is a frequent screwing / unscrewing of the plug, for the possibility of deformation of the metal packing ring.

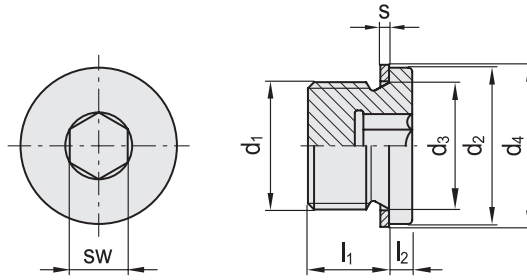


Conversion Table			
1 mm = 0.039 inch			
d2			
mm	inch	mm	inch
12	0.47	25	0.98
14	0.55	26	1.01
17	0.66	27	1.05
18	0.70	29	1.13
19	0.74	32	1.25
21	0.82	39	1.52
22	0.86	49	1.91
23	0.90	55	2.15



DIN 908-A4-A

Code	Description	d1	d2 h14	d3	l1 ±0.2	l2 +0.5	sw	⚖
GN.90720	DIN 908-A4-M8X1-A	M 8 x 1	12	8.3	8	3	4	5
GN.90725	DIN 908-A4-M10X1-A	M 10 x 1	14	10.3	8	3	5	7
GN.90704	DIN 908-A4-M12X1,5-A	M 12 x 1.5	17	12.3	12	3	6	12
GN.90705	DIN 908-A4-M14X1,5-A	M 14 x 1.5	19	14.3	12	3	6	17
GN.90709	DIN 908-A4-M16X1,5-A	M 16 x 1.5	21	16.3	12	3	8	22
GN.90710	DIN 908-A4-M18X1,5-A	M 18 x 1.5	23	18.3	12	4	8	31
GN.90714	DIN 908-A4-M20X1,5-A	M 20 x 1.5	25	20.3	14	4	10	40
GN.90715	DIN 908-A4-M22X1,5-A	M 22 x 1.5	27	22.3	14	4	10	48
GN.90719	DIN 908-A4-M24X1,5-A	M 24 x 1.5	29	24.3	14	4	12	56
GN.90804	DIN 908-A4-G1/8-A	G 1/8	14	10	8	3	5	7
GN.90800	DIN 908-A4-G1/4-A	G 1/4	18	13.4	12	3	6	14
GN.90815	DIN 908-A4-G3/8-A	G 3/8	22	17	12	3	8	24
GN.90799	DIN 908-A4-G1/2-A	G 1/2	26	21.3	14	4	10	43
GN.90814	DIN 908-A4-G3/4-A	G 3/4	32	26.7	16	4	12	77
GN.90810	DIN 908-A4-G1-A	G 1	39	33.5	16	5	17	124
GN.90809	DIN 908-A4-G1 1/4-A	G 1 1/4	49	42.2	16	5	22	177
GN.90805	DIN 908-A4-G1 1/2-A	G 1 1/2	55	48.1	16	5	24	245



DIN 908-A4-AC

INOX STAINLESS STEEL METRIC

Code	Description	d1	d2 h14	d3	d4	l1 ±0.2	l2 +0.5	s	sw	⚖
GN.90870	DIN 908-A4-M8X1-AC	M 8 x 1	12	8.3	11.5	8	3	1	4	5
GN.90846	DIN 908-A4-M10X1-AC	M 10 x 1	14	10.3	13.5	8	3	1	5	7
GN.90849	DIN 908-A4-M12X1,5-AC	M 12 x 1.5	17	12.3	16	12	3	1.5	6	12
GN.90852	DIN 908-A4-M14X1,5-AC	M 14 x 1.5	19	14.3	18	12	3	1.5	6	17
GN.90855	DIN 908-A4-M16X1,5-AC	M 16 x 1.5	21	16.3	20	12	3	1.5	8	22
GN.90858	DIN 908-A4-M18X1,5-AC	M 18 x 1.5	23	18.3	22	12	4	1.5	8	31
GN.90861	DIN 908-A4-M20X1,5-AC	M 20 x 1.5	25	20.3	24	14	4	1.5	10	40
GN.90864	DIN 908-A4-M22X1,5-AC	M 22 x 1.5	27	22.3	27	14	4	1.5	10	48
GN.90867	DIN 908-A4-M24X1,5-AC	M 24 x 1.5	29	24.3	29	14	4	2	12	56
GN.90828	DIN 908-A4-G1/8-AC	G 1/8	14	10	13.5	8	3	1	5	7
GN.90825	DIN 908-A4-G1/4-AC	G 1/4	18	13.4	18	12	3	1.5	6	14
GN.90843	DIN 908-A4-G3/8-AC	G 3/8	22	17	21	12	3	1.5	8	24
GN.90822	DIN 908-A4-G1/2-AC	G 1/2	26	21.3	26	14	4	1.5	10	43
GN.90840	DIN 908-A4-G3/4-AC	G 3/4	32	26.7	32	16	4	2	12	77
GN.90837	DIN 908-A4-G1-AC	G 1	39	33.5	39	16	5	2	17	124
GN.90834	DIN 908-A4-G1 1/4-AC	G 1 1/4	49	42.2	49	16	5	2	22	177
GN.90831	DIN 908-A4-G1 1/2-AC	G 1 1/2	55	48.1	55	16	5	2	24	245

DIN 908-A4-AA

INOX STAINLESS STEEL

Code	Description	d1	d2 h14	d3	d4	l1 ±0.2	l2 +0.5	s	sw	⚖
GN.90869	DIN 908-A4-M8X1-AA	M 8 x 1	12	8.3	11.5	8	3	1	4	5
GN.90845	DIN 908-A4-M10X1-AA	M 10 x 1	14	10.3	13.5	8	3	1	5	7
GN.90848	DIN 908-A4-M12X1,5-AA	M 12 x 1.5	17	12.3	16	12	3	1.5	6	12
GN.90851	DIN 908-A4-M14X1,5-AA	M 14 x 1.5	19	14.3	18	12	3	1.5	6	17
GN.90854	DIN 908-A4-M16X1,5-AA	M 16 x 1.5	21	16.3	20	12	3	1.5	8	22
GN.90857	DIN 908-A4-M18X1,5-AA	M 18 x 1.5	23	18.3	22	12	4	1.5	8	31
GN.90860	DIN 908-A4-M20X1,5-AA	M 20 x 1.5	25	20.3	24	14	4	1.5	10	40
GN.90863	DIN 908-A4-M22X1,5-AA	M 22 x 1.5	27	22.3	27	14	4	1.5	10	48
GN.90866	DIN 908-A4-M24X1,5-AA	M 24 x 1.5	29	24.3	29	14	4	2	12	56
GN.90827	DIN 908-A4-G1/8-AA	G 1/8	14	10	13.5	8	3	1	5	7
GN.90824	DIN 908-A4-G1/4-AA	G 1/4	18	13.4	18	12	3	1.5	6	14
GN.90842	DIN 908-A4-G3/8-AA	G 3/8	22	17	21	12	3	1.5	8	24
GN.90821	DIN 908-A4-G1/2-AA	G 1/2	26	21.3	26	14	4	1.5	10	43
GN.90839	DIN 908-A4-G3/4-AA	G 3/4	32	26.7	32	16	4	2	12	77
GN.90836	DIN 908-A4-G1-AA	G 1	39	33.5	39	16	5	2	17	124
GN.90833	DIN 908-A4-G1 1/4-AA	G 1 1/4	49	42.2	49	16	5	2	22	177
GN.90830	DIN 908-A4-G1 1/2-AA	G 1 1/2	55	48.1	55	16	5	2	24	245

DIN 908-A4-AN

INOX STAINLESS STEEL

Code	Description	d1	d2 h14	d3	d4	l1 ±0.2	l2 +0.5	s	sw	⚖
GN.90871	DIN 908-A4-M8X1-AN	M 8 x 1	12	8.3	11.5	8	3	1	4	5
GN.90847	DIN 908-A4-M10X1-AN	M 10 x 1	14	10.3	13.5	8	3	1	5	7
GN.90850	DIN 908-A4-M12X1,5-AN	M 12 x 1.5	17	12.3	16	12	3	1.5	6	12
GN.90853	DIN 908-A4-M14X1,5-AN	M 14 x 1.5	19	14.3	18	12	3	1.5	6	17
GN.90856	DIN 908-A4-M16X1,5-AN	M 16 x 1.5	21	16.3	20	12	3	1.5	8	22
GN.90859	DIN 908-A4-M18X1,5-AN	M 18 x 1.5	23	18.3	22	12	4	1.5	8	31
GN.90862	DIN 908-A4-M20X1,5-AN	M 20 x 1.5	25	20.3	24	14	4	1.5	10	40
GN.90865	DIN 908-A4-M22X1,5-AN	M 22 x 1.5	27	22.3	27	14	4	1.5	10	48
GN.90868	DIN 908-A4-M24X1,5-AN	M 24 x 1.5	29	24.3	29	14	4	2	12	56
GN.90829	DIN 908-A4-G1/8-AN	G 1/8	14	10	13.5	8	3	1	5	7
GN.90826	DIN 908-A4-G1/4-AN	G 1/4	18	13.4	18	12	3	1.5	6	14
GN.90844	DIN 908-A4-G3/8-AN	G 3/8	22	17	21	12	3	1.5	8	24
GN.90823	DIN 908-A4-G1/2-AN	G 1/2	26	21.3	26	14	4	1.5	10	43
GN.90841	DIN 908-A4-G3/4-AN	G 3/4	32	26.7	32	16	4	2	12	77
GN.90838	DIN 908-A4-G1-AN	G 1	39	33.5	39	16	5	2	17	124
GN.90835	DIN 908-A4-G1 1/4-AN	G 1 1/4	49	42.2	49	16	5	2	22	177
GN.90832	DIN 908-A4-G1 1/2-AN	G 1 1/2	55	48.1	55	16	5	2	24	245



Accessories for hydraulic systems